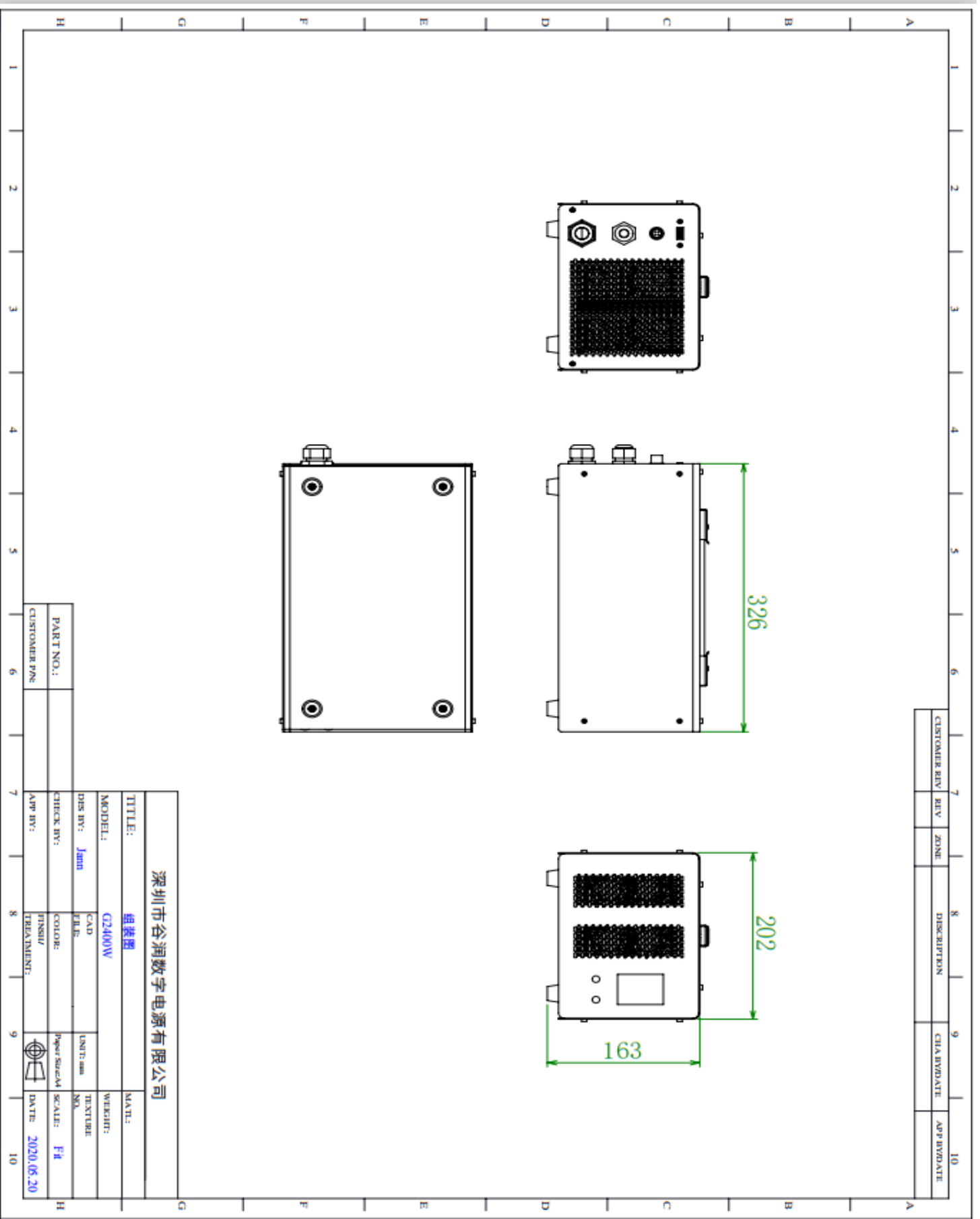




G2400-592300 (59.2V 30.0A) 48V Pb-Acid Battery Charger		
Item	Specification	Remark
1.Input		
Rating input voltage	100~240Vac 50/60Hz	
Input voltage range	90~264Vac	
Rating input current	21Arms	Input:100V Output:Full load
PF value	≥0.96	
Standby input power	≤8W	
Max input power	2100W	Input:100V Output:Full load
2.Output		
No load output voltage	<10.0V	
Output voltage range	DC42~59.2V	
Suit with battery type	48V Pb-Acid battery	
Charging current	30A ±10%	
Charging voltage	DC59.2V ±1%	
Pre-charge	-	
Charge-end current	≤6.0A	
Timer	-	
Max output power	1776W	
Ripple voltage	≤592mV	Full load
LCD	Display voltage,current,capacity	
Communication function	USB/CAN	The battery type (lead acid, lithium battery,LiFePO4 battery), charging voltage and charging current can be set
Shorted	Yes	
Reversed	Yes	
Efficiency	≥90%	Full load @220V
3.Environment		
Operate temperature	-10 ~ +40℃	
Operate humidity	< +90%	Relative humidity
Storage temperature	-40 ~ +70℃	
Storage humidity	0 ~ +95%	Relative humidity
Cooling	Fan	
Vibration resistance	5MM/50HZ/600S	Non-operating condition
Impact resistance	-	
4.Mechanical		
Weight	7.5Kg	
Size	326X202X163MM	Casing only
Connector	Refer to order	
5.Safety		
Max. temperature rise	< 40℃ on casing	
Safety approval	EN60950(LVD) ,EN55032(EMC)	
MTBF	30000H	
ESD	8.0KV	
Hi-Pot Insulation	i/p to o/p: 3000V (1 min)	



CUSTOMER DIV.	REV.	ZONE	DESCRIPTION	CHAIR/DRAWN	APP'D/DRAWN
---------------	------	------	-------------	-------------	-------------

深圳市谷润数字电源有限公司					
TITLE:	组装图		MAATL:		
MODEL:	G2400W		WEIGHT:		
DES BY:	Jiahn	CAD FILE:	UNIT: mm	TEXTURE:	
CHECK BY:		COLOR:	Paper Size/A4	SCALE:	1:1
APP BY:		TREASUREMENT:		DATE:	2020.06.20
PART NO.:					
CUSTOMER P/N:					